

# SUBMITTAL DATA SHEET



Series Name: Cooling Only Acoil Series  
Model Number: MAAHE-H60B-CA/MO1AE-C60B-2A

## Air Handler Heat Pump System

Location:	Approval:
Engineer:	Date:
Submitted to:	Construction:
Submitted by:	Unit #:
Reference:	Drawing #:



## INDOOR SPECIFICATION

Dimension (W×D×H)	inch	21-5/8 x 21-1/2 x 27-3/4
	mm	549×546×706
Package (W×D×H)	inch	31.69 x 25.59 x 26.57
	mm	805×650×675
Net/Gross Weight	lbs	97/115
	kg	43.9/52.2

## OUTDOOR SPECIFICATION

Compressor Type		ROTARY
Compressor Model		KTQ420D1UMU
Refrigerant		R454B
Refrigerant Oil Charge(mL)		1400
Refrigerant Oil		VG74
Outdoor Air Flow (Max) (CFM)		4,503
Outdoor Noise Level (dBA)		63
Dimension (W×D×H)	inch	37-1/2 x 16-3/8 x 52-1/2
	mm	952 × 416 × 1333
Package (W×D×H)	inch	43-1/8 x 19-1/2 x 58-1/4
	mm	1095 × 495 × 1480
Net/Gross Weight	lbs	212.30/244.49
	kg	96.3/110.9

## EFFICIENCY

Cooling		Heating	
SEER2	15.6	HSPF2-4	/
EER2	9.8	COP	/

## PERFORMANCE of Cooling

Cooling (Btu/hr)	
Rated Capacity	52,000
Min/Max Capacity	20,400~56,000
Moisture Removal(L/h)	8.1
Standard Operating Range(*F/*C)	-13~122(-25 ~ 50)
Rated Cooling Conditions:	
Indoor: 80°F DB/67°F WB	
Outdoor: 95°F DB/75°F WB	

## PERFORMANCE of Heating

Heating (Btu/hr)	
1. @ 47°F Rated	/
2. @ 47°F Min/Max Capacity	/
3. @ 17°F Rated	/
4. @ 5°F Rated: Capacity / COP	///
5. @ 5°F Max: Capacity	/
Standard Operating Range(*F/*C)	/(/)
1. Rated Heating Conditions:	
Indoor: 70°F DB/60°F WB	
Outdoor: 47°F DB/43°F WB	
2. Rated Heating Conditions:	
Indoor: 70°F DB/60°F WB	
Outdoor: 17°F DB/15°F WB	
3. Heating Conditions, Compressor	
Operating at Max. Frequency	
Indoor: 70°F DB/60°F WB	
Outdoor: 5°F DB/5°F WB	

## ELECTRICAL

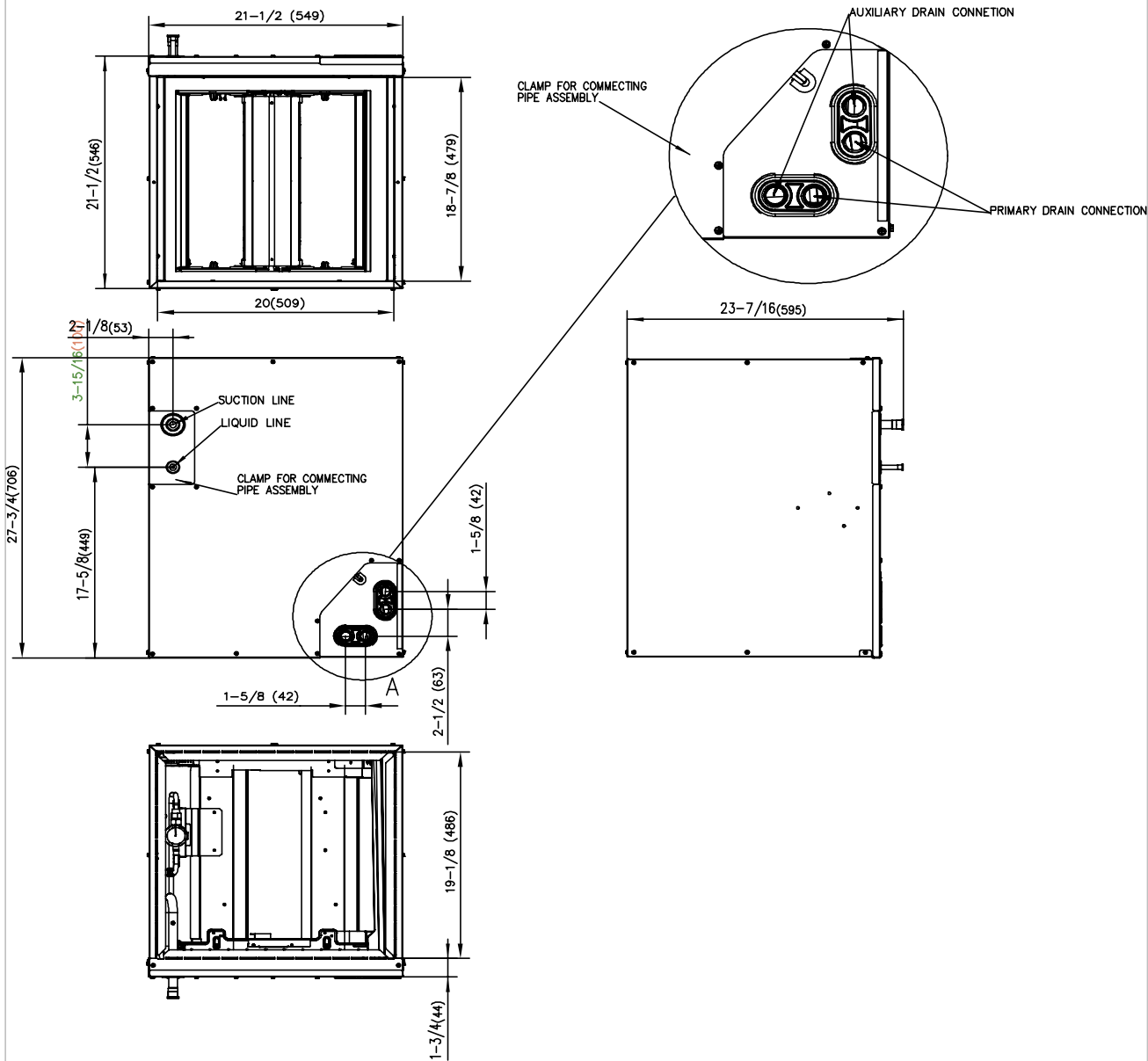
Indoor Power Supply	24V,60Hz,1Ph
Indoor MCA 115V/(208/230V)	/
Indoor MOP	/
Outdoor Power Supply	208/230,60Hz,1Ph
Outdoor MCA	37
Outdoor MOP	40
Communication Wiring	AWG 20-2
Compressor RLA	27.5
Outdoor Fan Motor RLA	2.4
Outdoor Fan Motor W	/
Indoor Fan Motor RLA	/
Indoor Fan Motor W	/
System Power Input @ Cooling (W)	5,306(1,530 ~ 5,960)
System Power Input @ Heating (W)	/(/)
MCA: Min. circuit amps (A)	MOCP: Max. over current protection (A)
RLA: Rated load amps (A)	W: Fan motor rated output (W)

## PIPING

Throttle type(Indoor)	TXV
Throttle type(Outdoor)	/
Liquid Size	9.52mm(3/8in)
Gas Size	19mm(3/4in)
Max. Piping Length(ft/m)	246(75)
Max. Height Difference(ft/m)	98(30)
Max. Pre-charged Length(ft/m)	24.6(7.5)
Refrigerant Pre-charged Amount(oz/kg)	169.32(4.80)
Additional Charge of Refrigerant(oz/ft)/(g/m)	0.7(65)
Connection Method	Flared

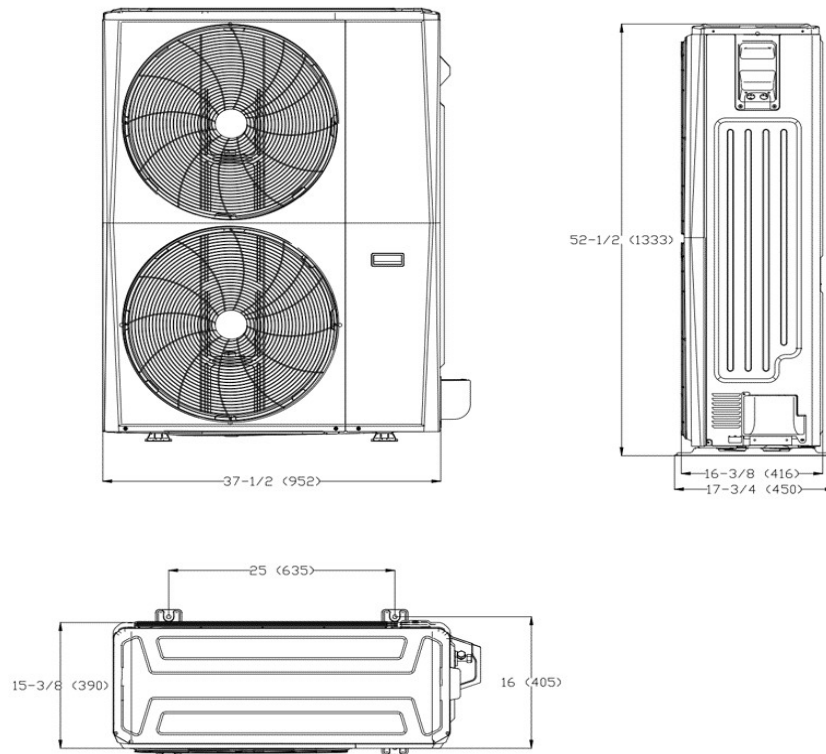
Indoor Unit Dimension

Unit:inch(mm)

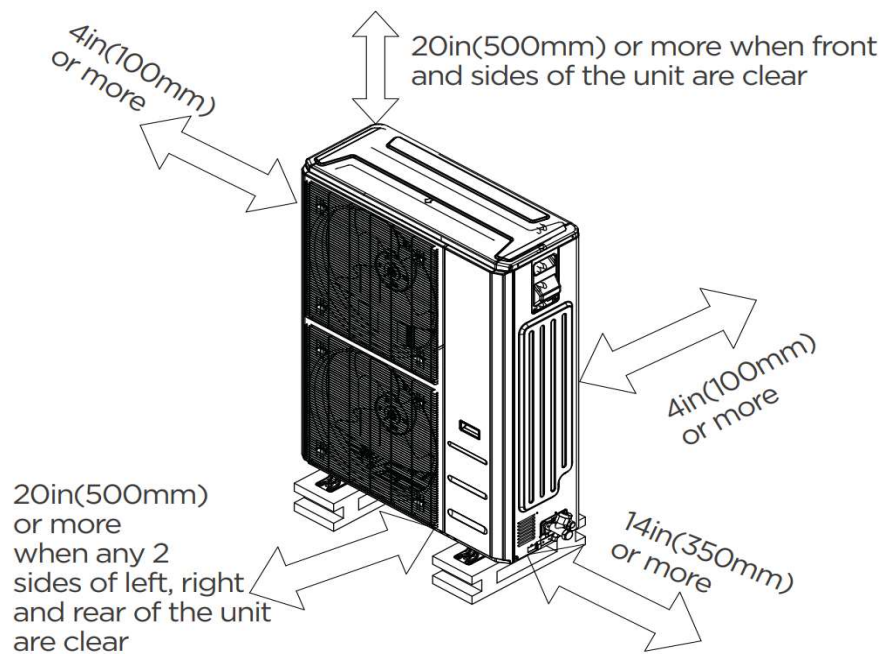


## Outdoor Unit Dimension

Unit:inch(mm)



## Installation Instruction For Outdoor Unit



#### Features

- Multi-position installation: horizontal(left or right), vertical( up or down)
- Aluminum Coil
- R454B refrigerant sensor
- Easy Maintenance
- Multiple control options available:
  - Two-way communication wired controller with built-in Wi-Fi:120N(X6W)
  - Third-Party 24V Thermostat
- Crankcase heater equipped as standard